

# HEALTHY CARROLL VITAL SIGNS: Measures of Community Health INTERPERSONAL VIOLENCE Data Charts

Updated April 2009

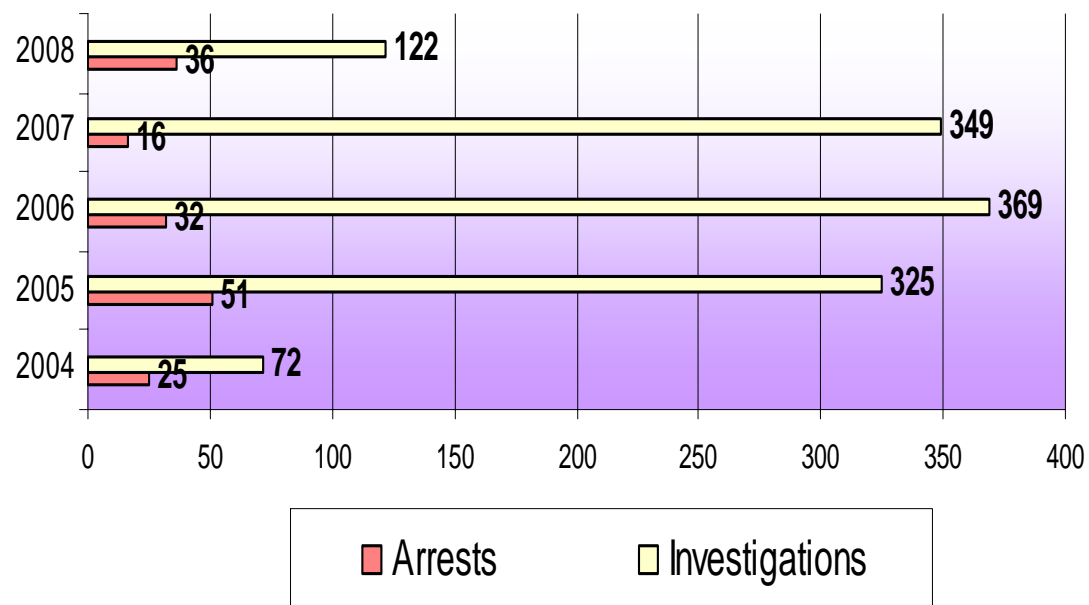
1. Child Abuse Investigations and Arrests
2. Weapons Violations at Carroll County Public Schools
3. Juvenile Arrests for Assault
4. Cases Filed for Domestic Violence and Peace Orders
5. Aggravated Assaults and Forcible Rapes



# Interpersonal Violence – Youth

Number of child abuse investigations and arrests in Carroll County

**Improvement Objective: 11.1 cases or less per 1,000 children under 18**

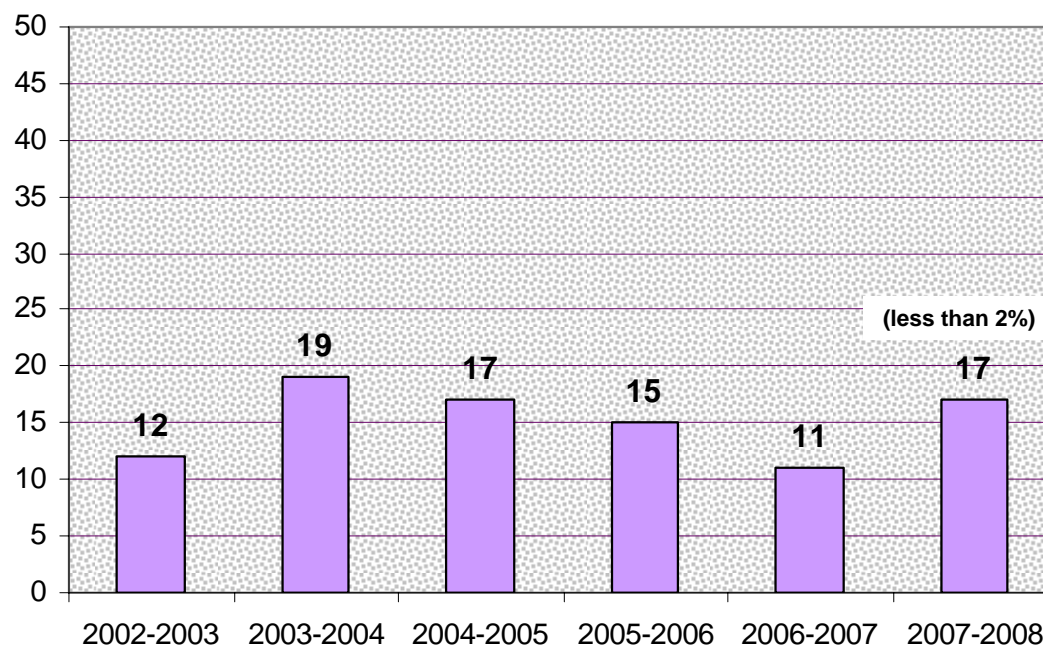


DATA SOURCE: Carroll County Sheriff's Department Annual Report

# Interpersonal Violence – Youth

## Number of Weapons Violations at Carroll County Public Schools

**Improvement Objective: 6% or less of students in grades 9 - 12**



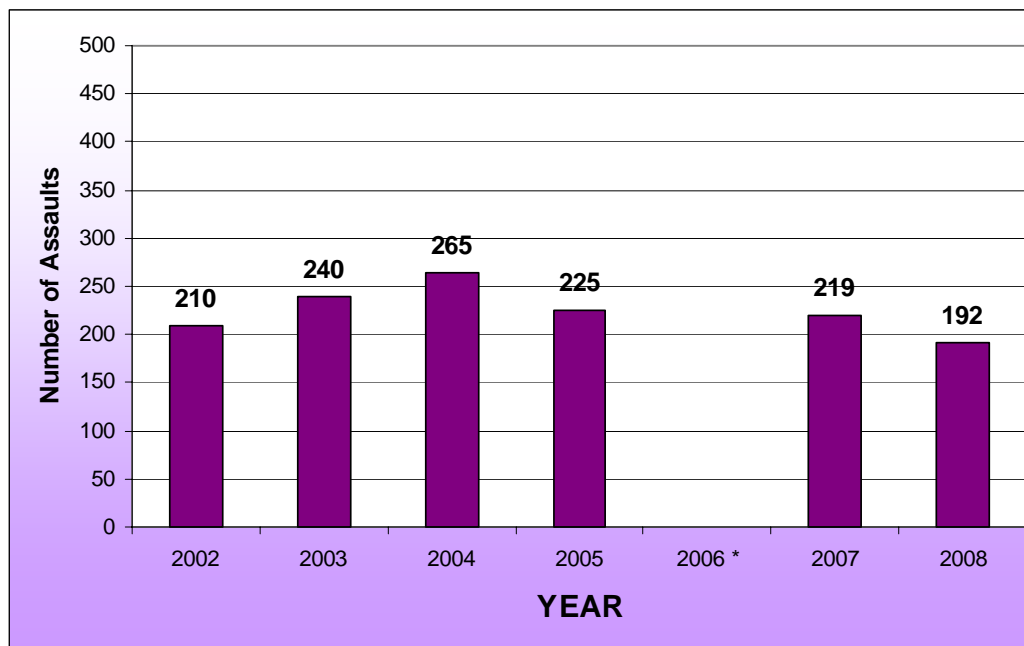
NOTE: Data is for all grades. The 17 occurrences in 2007-2008 represent less than 2% of the total CCPS student population.

DATA SOURCE: Carroll County Public Schools Annual Student Services Report

# Interpersonal Violence – Youth

**Number of Juvenile Arrests for Assault in Carroll County  
(includes both physical and sexual assaults)**

**Improvement Objective: 33.3% or less of all students 9th - 12th grade who report physical fighting in the previous 12 months (YRBS)**



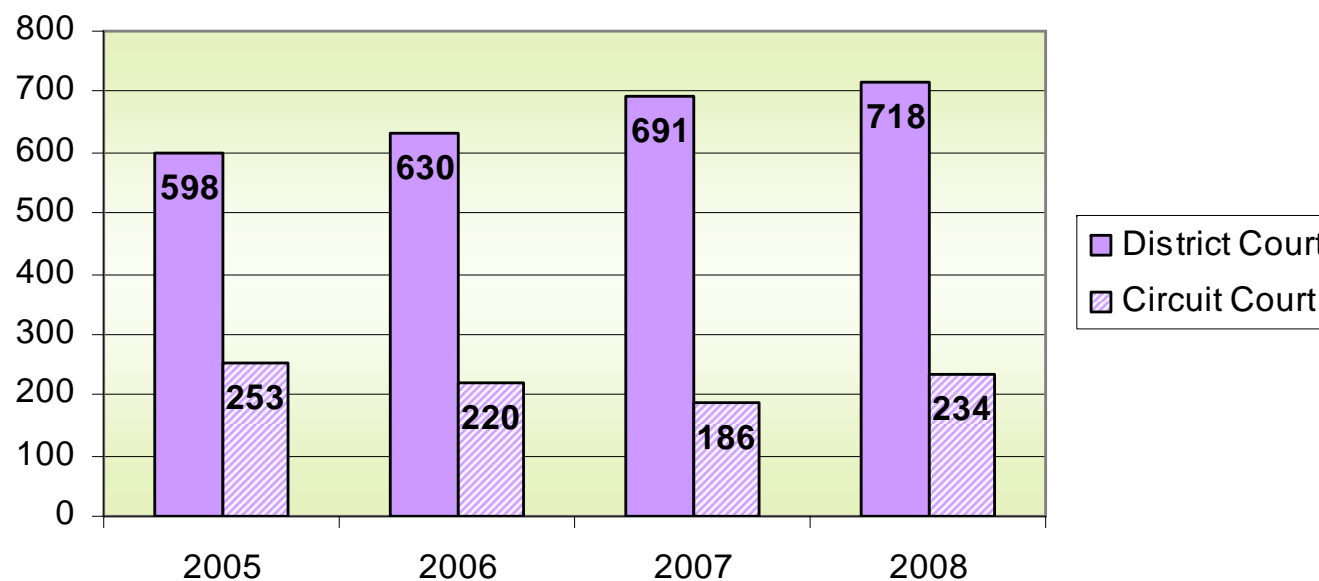
DATA SOURCE: Carroll County Department of Juvenile Services

\* 2006 data not available

# Interpersonal Violence – Adults & Families

**Number of cases filed with the court system in Carroll County for domestic violence and peace orders (Circuit and District Courts, combined)**

**Improvement Objective: 3.6 physical assaults or less per 1,000 persons age 12 and older**

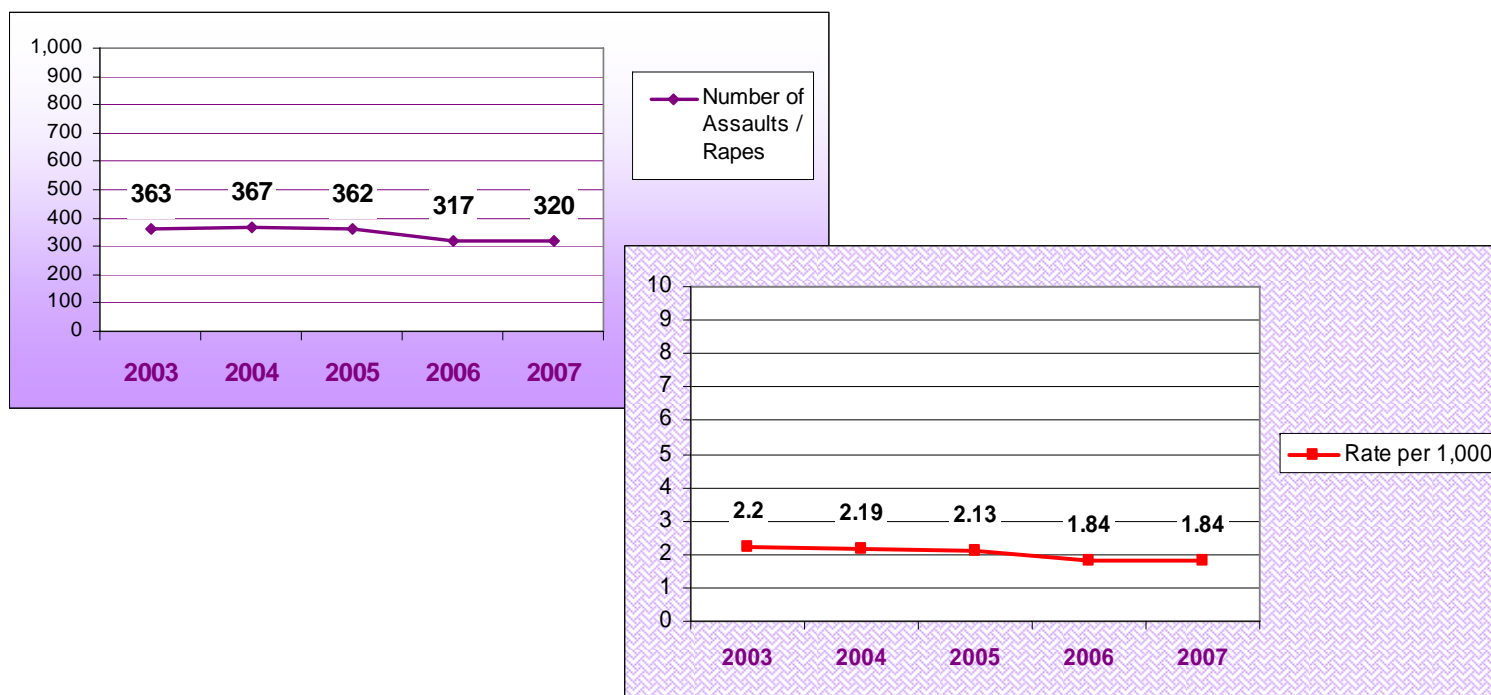


DATA SOURCE: Carroll County District and Circuit Court and Carroll County Sheriff's Office Annual Report

# Interpersonal Violence – Adults & Families

## Aggravated Assaults and Forcible Rapes in Carroll County

**Improvement Objective: 0.7 cases per 1,000 - persons age 12 and over**



NOTE: Data not available for persons age 12 and over. Data is for persons age 20 and over.

DATA SOURCE: Uniform Crime Report, Maryland State Police