

## HEALTHY CARROLL VITAL SIGNS: Measures of Community Health

# HEART HEALTH Data Charts

Updated June 2011

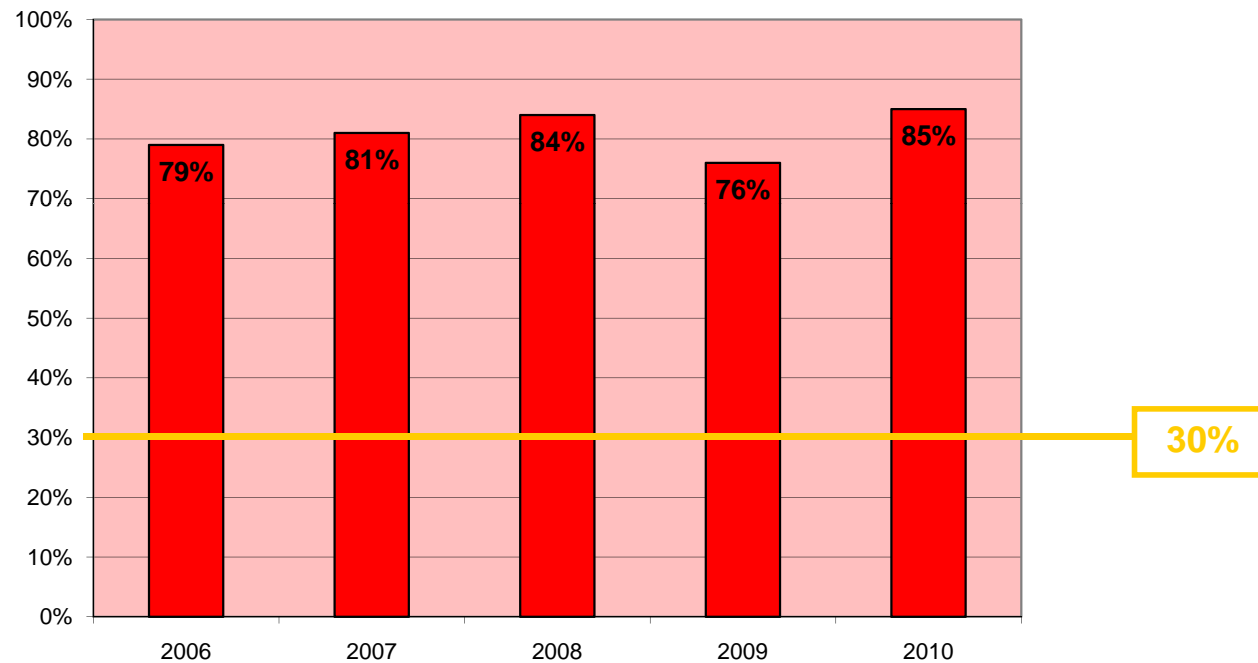
- Physical Activity 1
- Cardiovascular Disease: Deaths 2
- Cardiovascular Disease: High Blood Pressure 3
- Stroke 4
- Tobacco Use - Adult Smoking 5



# Heart Health – Physical Activity

Percentage of students participating in Project ACES physical activity challenge who met the goal of 60 minutes of activity per day

Improvement Objective: 30%

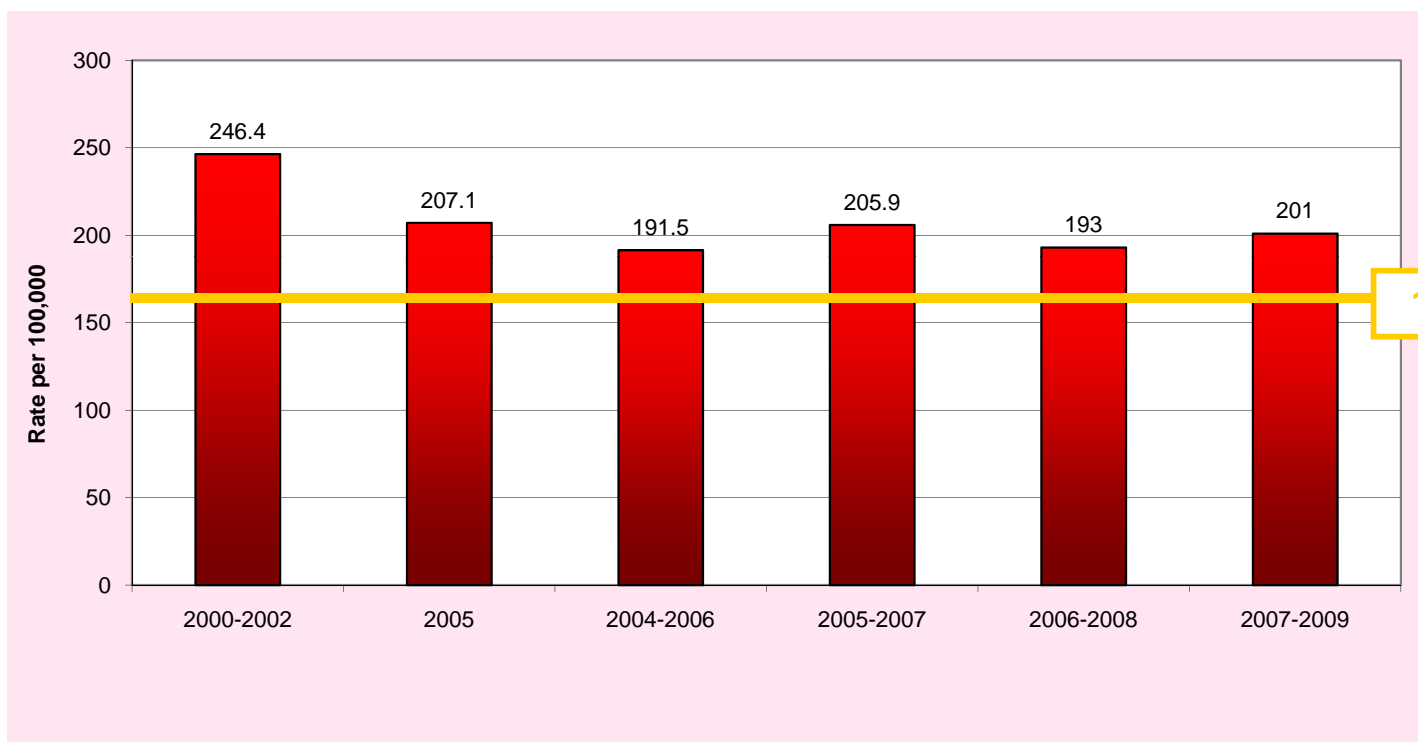


DATA SOURCE: Carroll County Public Schools

# Heart Health – Cardiovascular Disease

## Mortality Rate, Diseases of the Heart

Improvement Objective: 166 per 100,000 or less

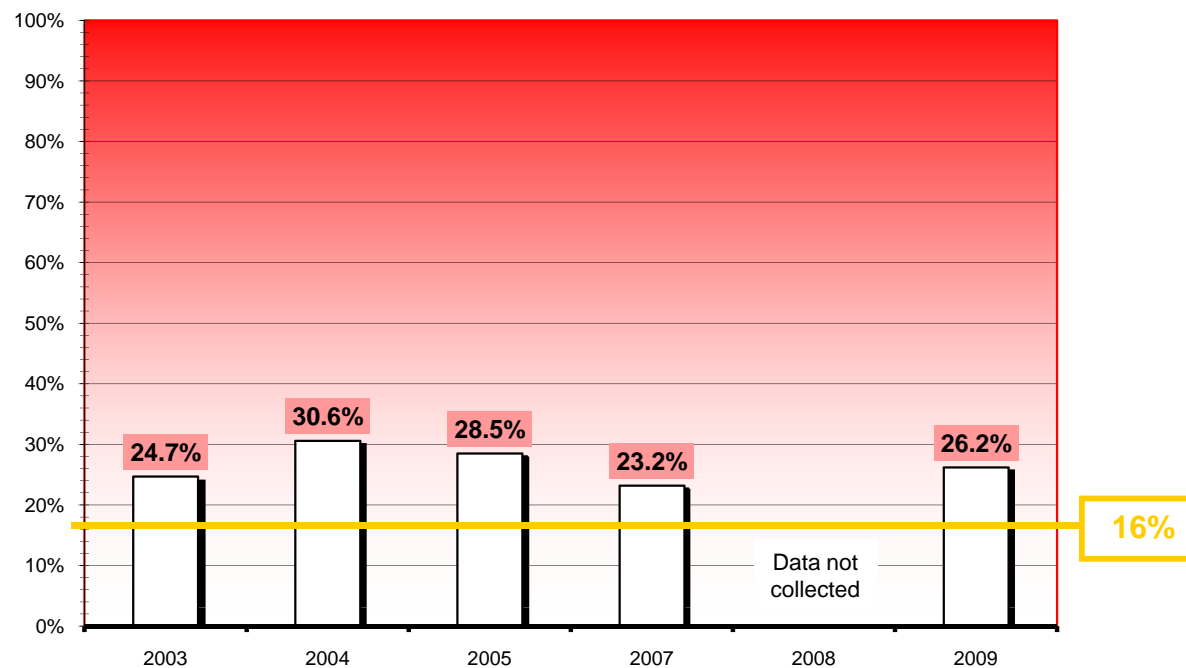


DATA SOURCE: Maryland Vital Statistics

# Heart Health – Cardiovascular Disease

Percentage of people told by a health care professional that they have high blood pressure

Improvement Objective: 16% or less

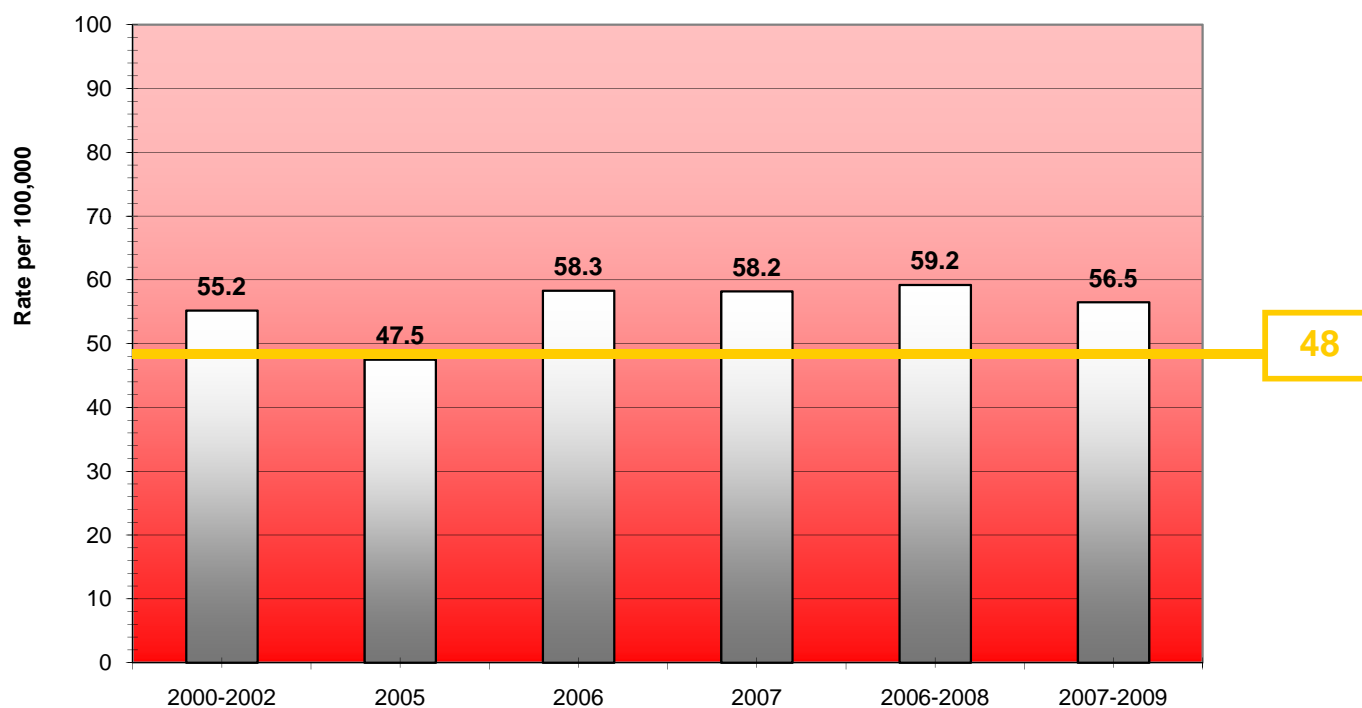


DATA SOURCE: Maryland Behavioral Risk Factor Surveillance System

# Heart Health – Stroke

## Deaths from Cerebrovascular Disease (Stroke Mortality Rate)

Improvement Objective: 48 per 100,000 or less

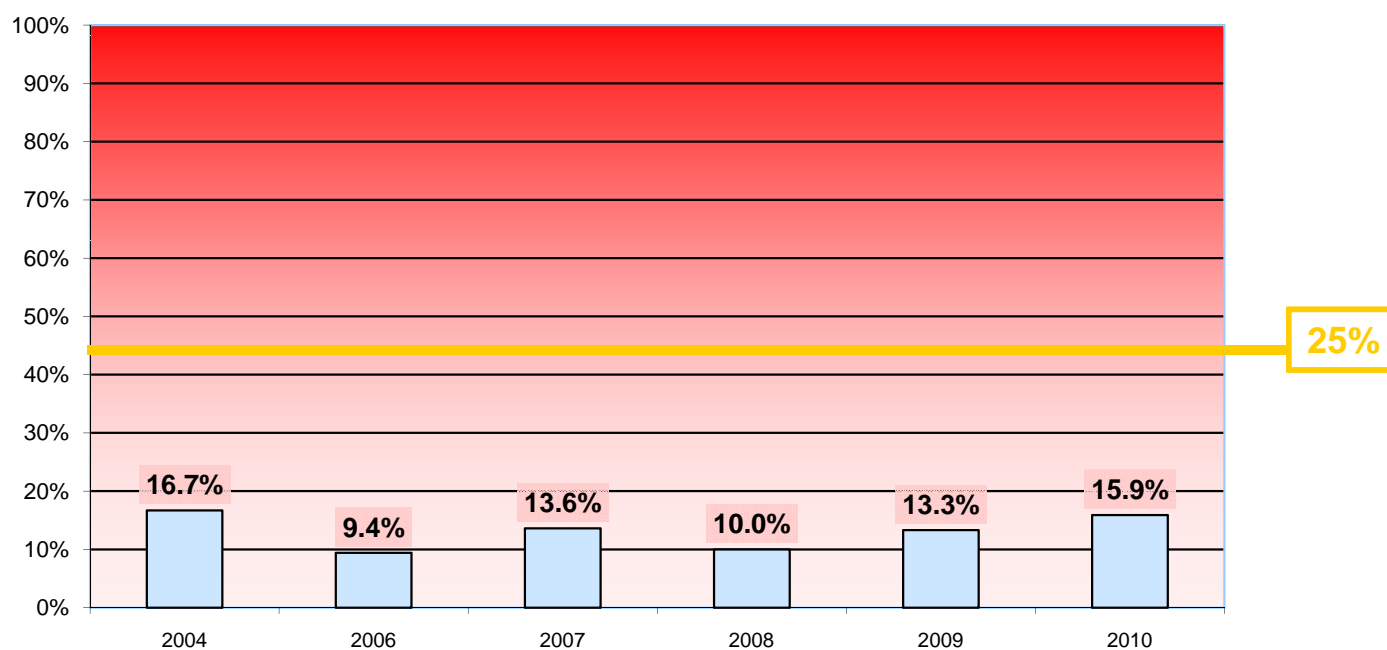


DATA SOURCE: Maryland Vital Statistics

# Heart Health – Tobacco Use

## Percentage of Adults Who Smoke Every Day

Improvement Objective: 25% or less



DATA SOURCE: Maryland Behavioral Risk Factor Surveillance System