

HEALTHY CARROLL VITAL SIGNS: Measures of Community Health ACCESS TO HEALTH CARE Data Charts

Updated April 2009

Medical Visits: Residents With a Usual Primary Care Provider	1
Medical Visits: Residents Unable to Afford Care	2
Medical Visits: Residents Who Have Health Insurance	3
Dental Care: Children Enrolled in MCHIP Who Get Dental Care	4

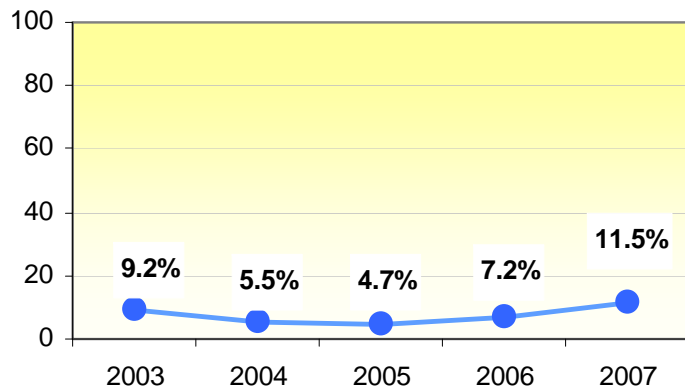




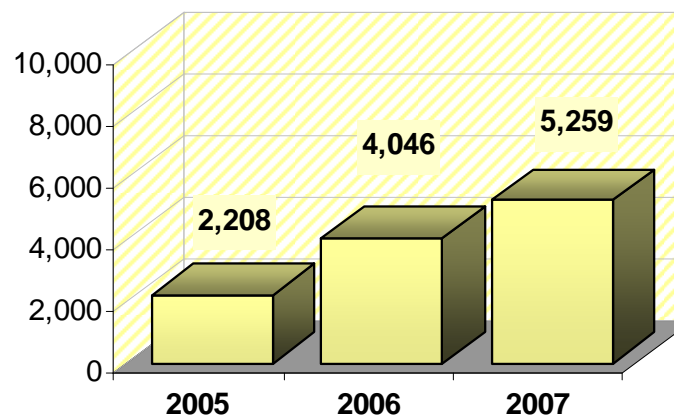
Access to Health Care: Medical Visits Residents With A Usual Primary Care Provider

Improvement Objective: 85% of all residents have a usual primary care provider

Percentage of survey participants who report having no health insurance



Number of income-eligible Carroll residents served by Access Carroll or Mission of Mercy

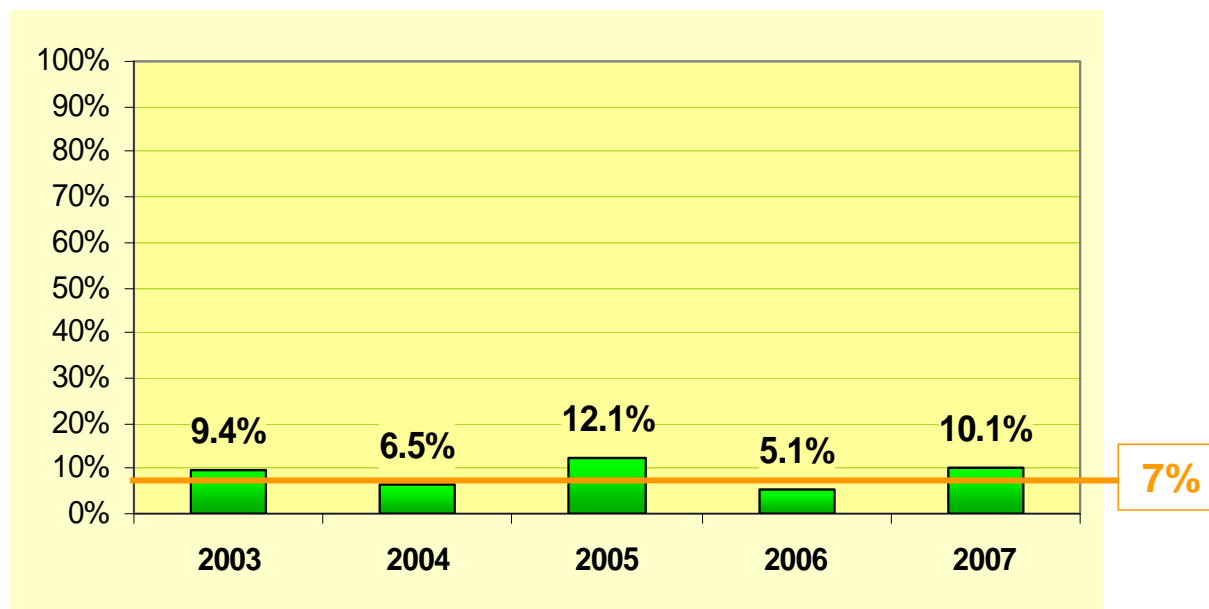


DATA SOURCES: Maryland BRFSS, Access Carroll Inc., Mission of Mercy

Access to Health Care: Medical Visits Residents Unable to Afford Care

Percentage of Carroll County Residents Who at
Some Point in the Last 12 Months
Could Not Afford to See a Doctor

Improvement Objective: 7% or Less



DATA SOURCE: Maryland Behavioral Risk Factor Surveillance System (MD BRFSS)

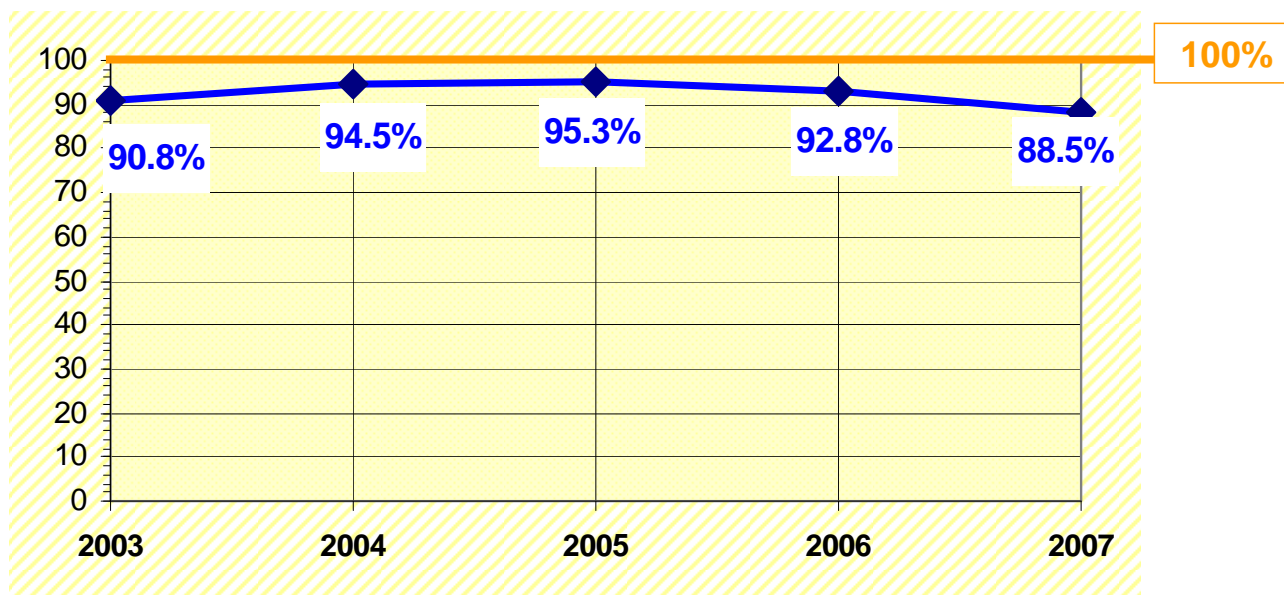


Access to Health Care: Medical Visits

Residents Who Have Health Insurance

Percentage of Residents Who Report Having Any Kind of Health Insurance

Improvement Objective: 100%

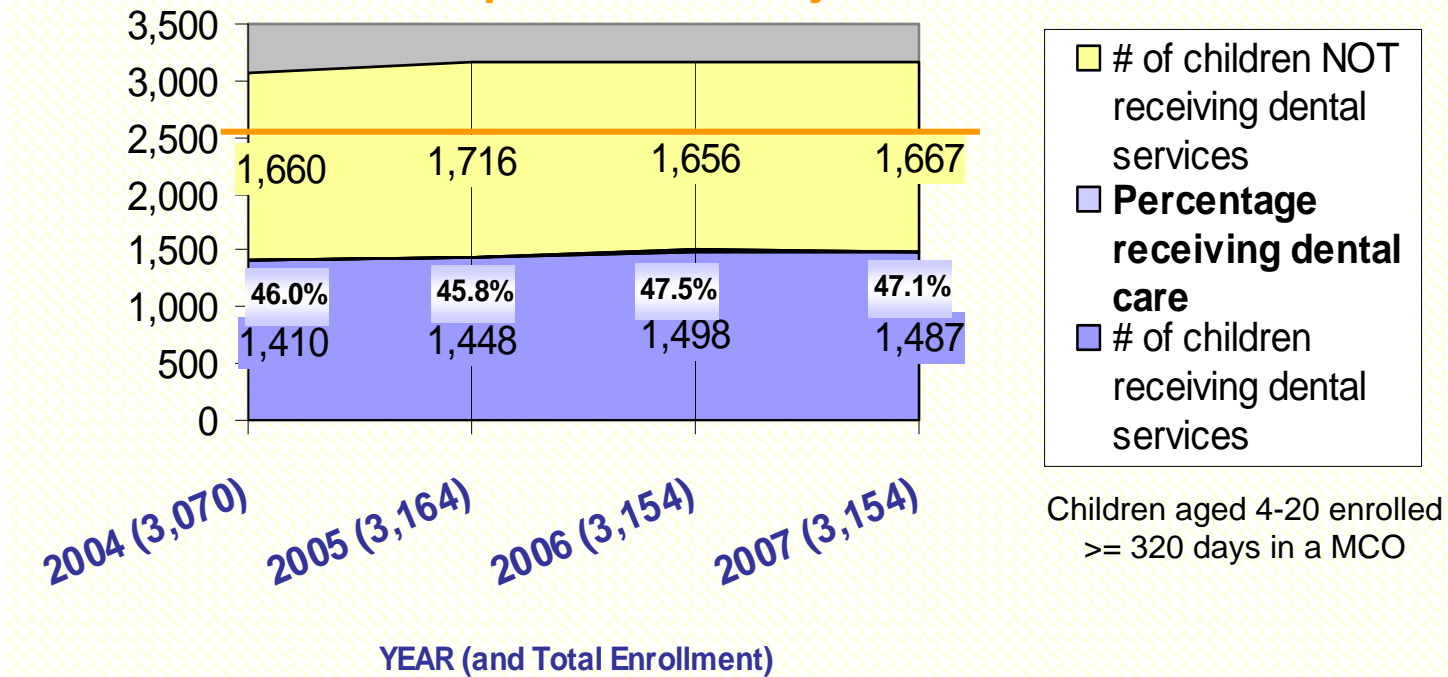


DATA SOURCE: Maryland Behavioral Risk Factor Surveillance System (MD BRFSS)

Access to Health Care – Dental Care

Percentage of Carroll County Children Enrolled in MCHIP Receiving Dental Care

Improvement Objective: 83%



DATA SOURCE: Maryland Children's Health Insurance Program